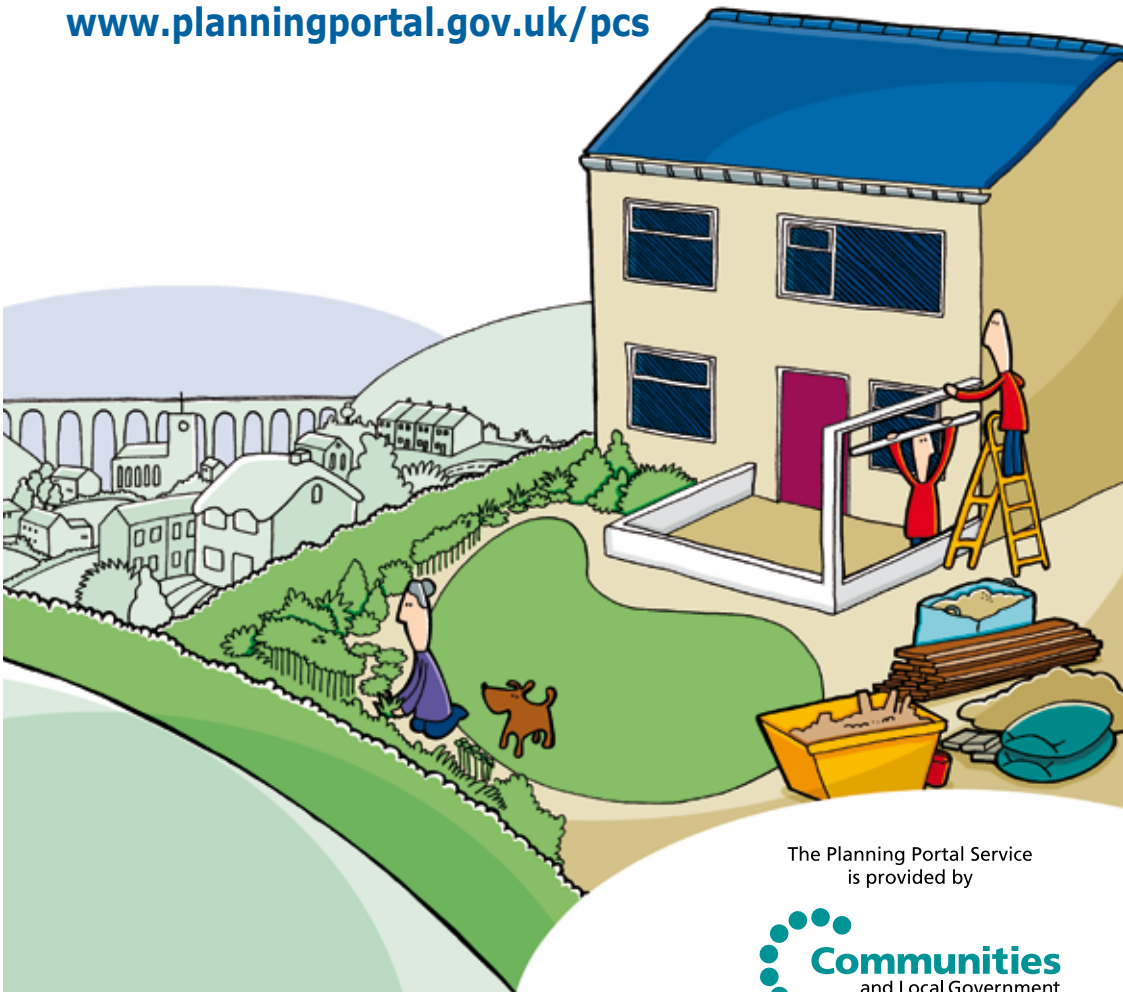


Your guide to APPEALS ONLINE

www.planningportal.gov.uk/pcs



The Planning Portal Service
is provided by

The right choice

The Planning Portal is the one-stop-shop for planning information and services online. Appeals are handled by the Planning Inspectorate, and you can access the appeals system online through the Planning Casework Service.

The service offers time and cost effective facilities that are easy to use.

So whether you are a home-owner or a planning professional, we can help.



Your questions answered

I don't have everything in electronic format, can I still submit online?

Yes, unless it is a Householder appeal. All other forms allow you to say which documents you are enclosing and which will follow separately.

If I make my appeal online, will it be treated any differently?

No. The process is the same whether you submit online or on paper.

Is there any help and advice available?

Yes. We have made the forms simple and easy to use, with guidance included where necessary. Online help is also available and you can always call us too.

www.planningportal.gov.uk/pcs

How the PCS works

The Planning Casework Service provides easy to use access to the appeals process. Here's what it can do:

Submit

The appeal form and local authority questionnaire forms are simple and easy to use, saving time, postage and printing costs. You get an immediate receipt and can download a copy of what you submit for your records and to pass on if necessary.

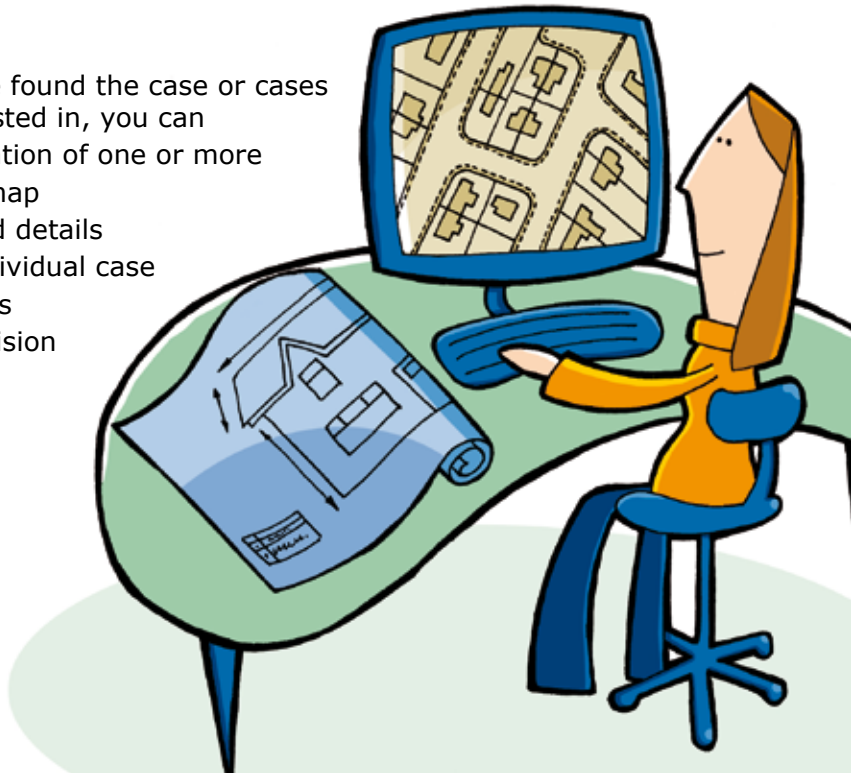
Search

You can find any case on the system using one or more of the available search fields, including case reference, town, date submitted and local planning authority. Searching by appeal reference is the quickest and easiest way - just enter 7 digit number starting with a 2 in the Case reference field.

View

Once you have found the case or cases you are interested in, you can

- view the location of one or more cases on a map
- view selected details about an individual case
- view progress
- view the decision



Why use the Planning Casework Service?

At a glance

- Improved choice
- Improved quality
- Improved productivity
- Improved understanding
- Quicker exchange
- Reduced costs



Getting started...

...couldn't be easier. Just log on to our site at www.planningportal.gov.uk/pcs and follow the simple instructions.

For further information contact us at pcs@pins.gsi.gov.uk or you can telephone the Planning Inspectorate's Customer Services Team on **0117 372 6372**



ISBN 978140981176-3

